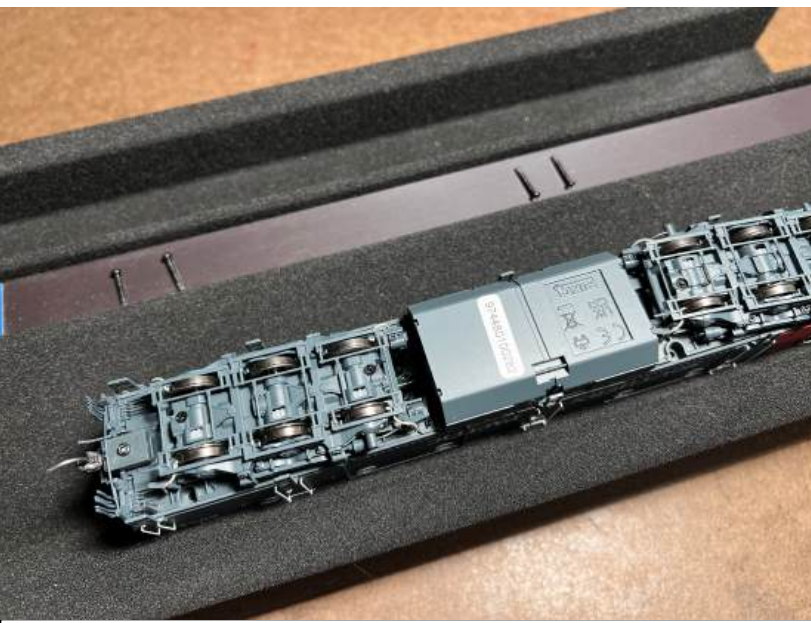
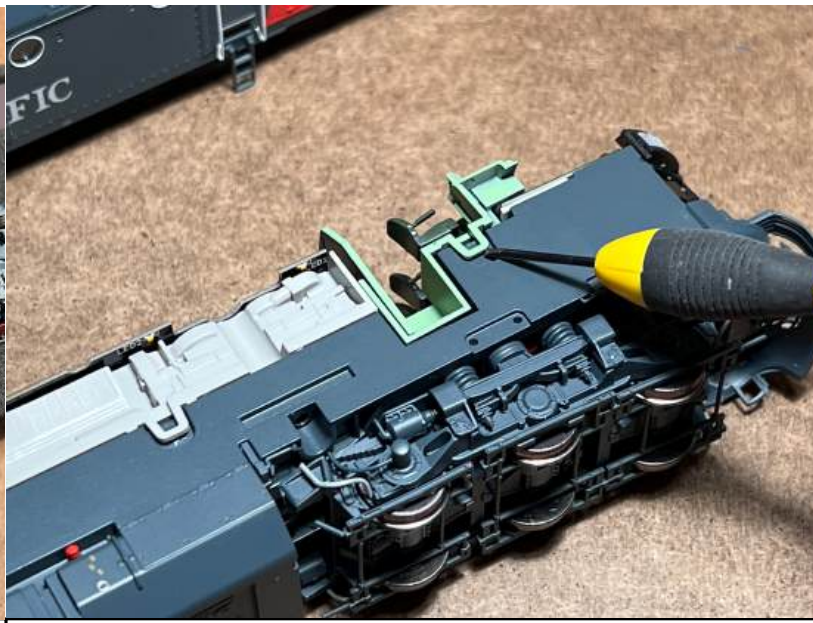


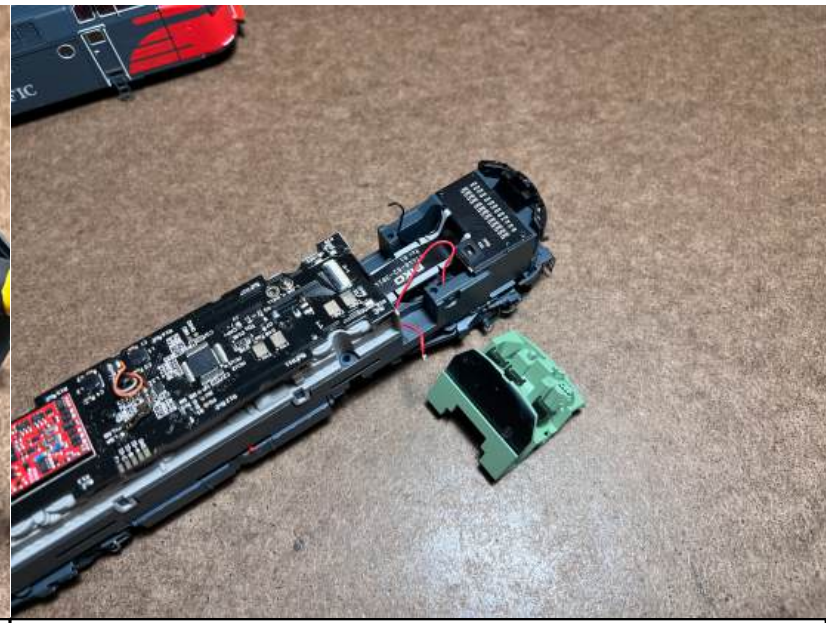
PIKO ML4000 Scale Sound Systems Speaker Replacement Guide



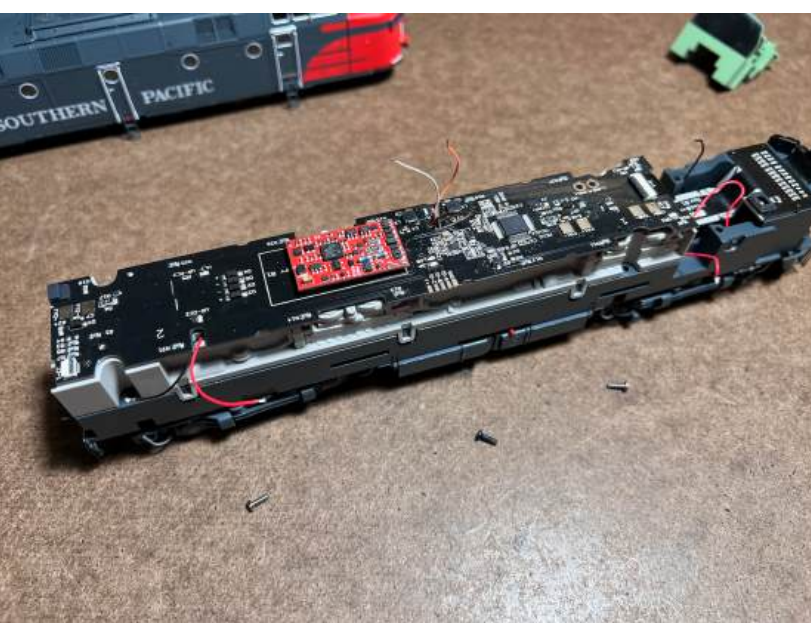
Remove the four screws holding the shell on.



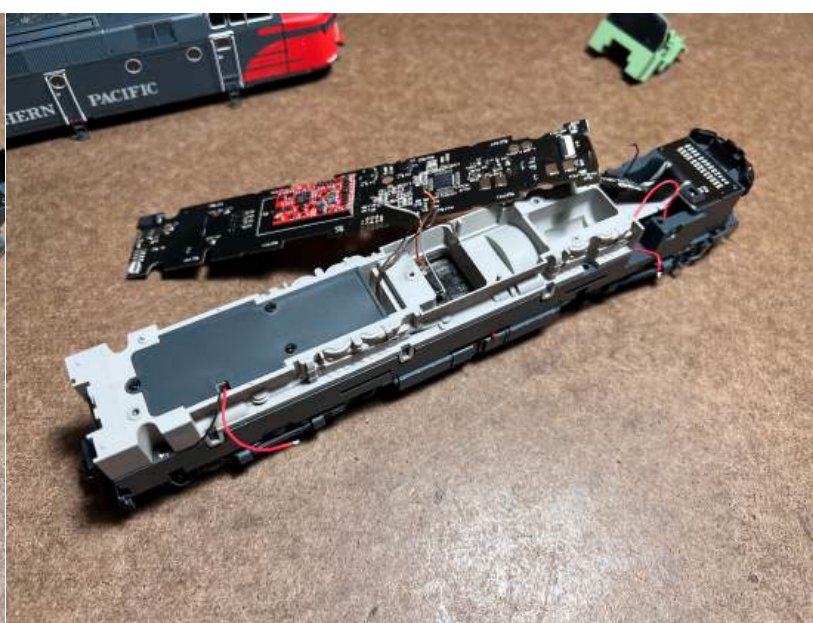
Gently release the two tabs holding the cab interior to the chassis.



Lift the interior off and unsolder the two front truck wires.



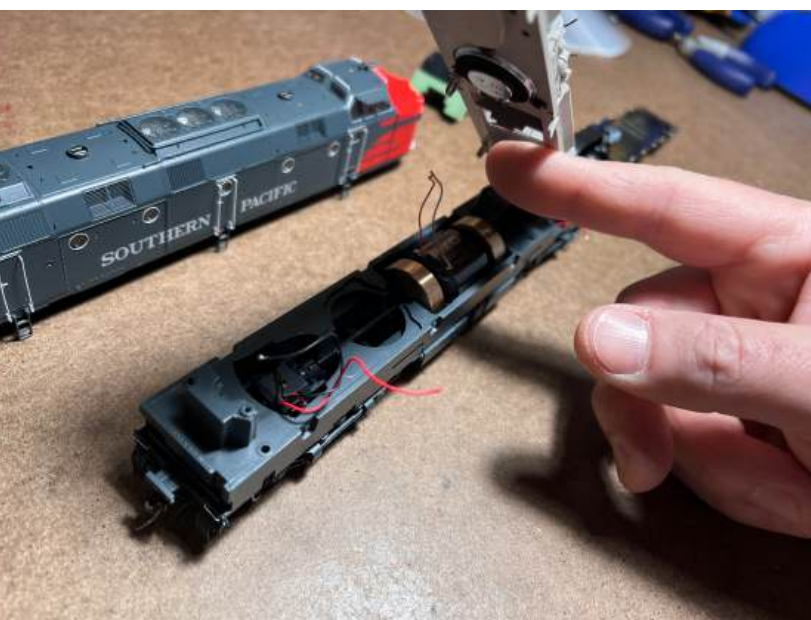
Unsolder the two rear truck wires, the two motor wires and the two speaker wires. Remove the three screws holding the PCB to the chassis.



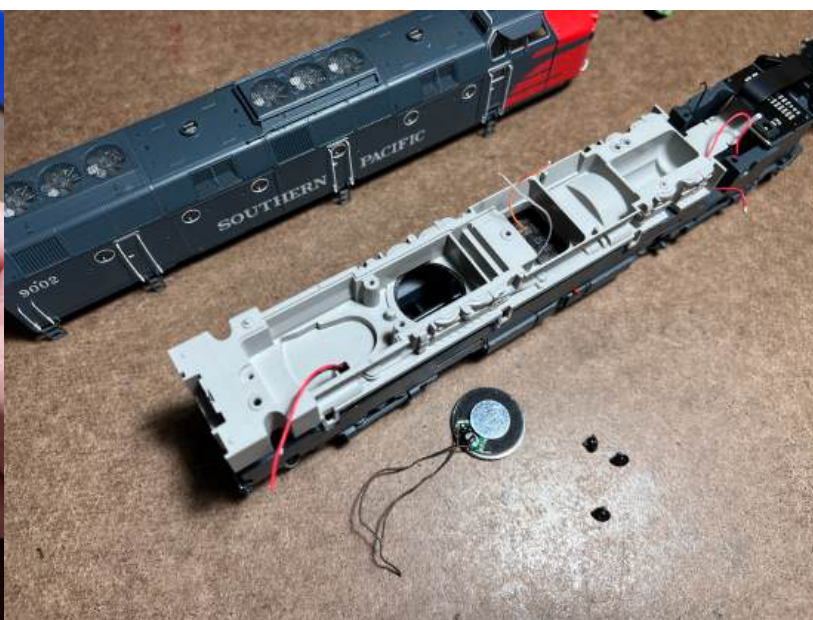
Lift the PCB. You should not need to pull the ribbon-cable from the PCB, but carefully handle the PCB during this process.



Remove the three screws and the cover of the enclosure.



Lift the top half and remove the three screws and stock driver.



Reseat the top half ensuring the truck and motor wires are routed correctly.



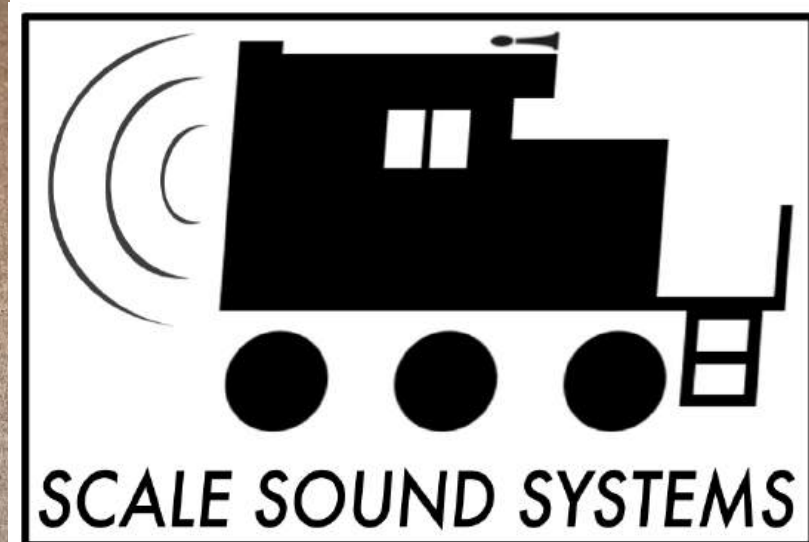
Solder 3" lengths of wire to the SSS speaker.



Route the speaker wires up trough the top-half passage and press the SSS speaker in place.



Reinstall the PCB with the three screws and re-solder all of the wires (which get re-routed through the same PCB holes). Replace the shell and attach with the four screws from step one.



www.scalesoundsystems.com